

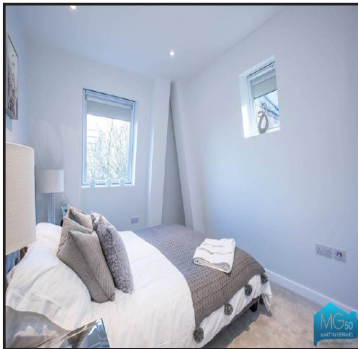


## Penthouse

## Chartwell Lodge

Jan 2019

Project Value £450K



The Scheme involved building a steel frame structure on the top of occupied flats below in a central London location. This presented our site team with many challenges which involved road closures for lifting equipment, temporarily re housing of occupants and liaising with adjoining owners regarding Party wall matters.

Our design and build team not only dealt with all the above but designed a beautiful build that sold off plan.

